

PlaceMade Manufacturing Foundry

SFMade, through its sister non-profit PlaceMade, is bringing over 50,000 SF of industrial space to the market in mid-2018. Spaces ranging from 1,000 SF to 25,400 SF are available over the four stories of this unprecedented building.



Located at 150 Hooper Street in the Design District of San Francisco, the Manufacturing Foundry is part of a larger, mixed-use commercial campus at 100 Hooper offering manufacturing, office, and public open space.

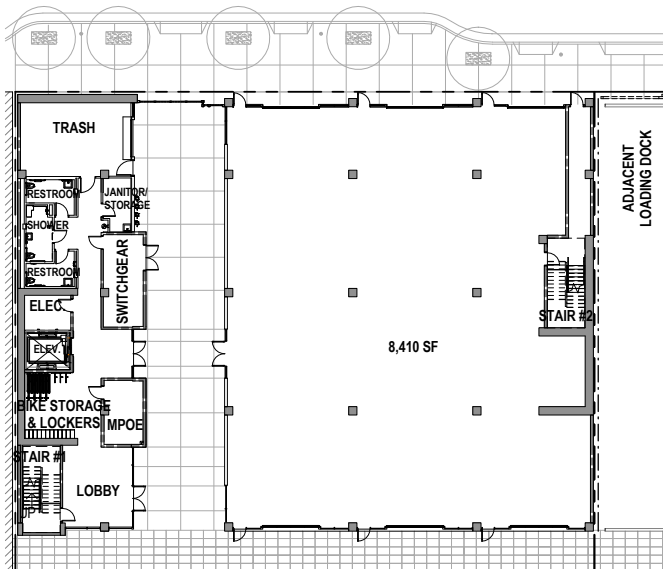
150 Hooper provides brand-new, affordable production space for manufacturers to work in a collaborative community environment.



PlaceMade Manufacturing Foundry

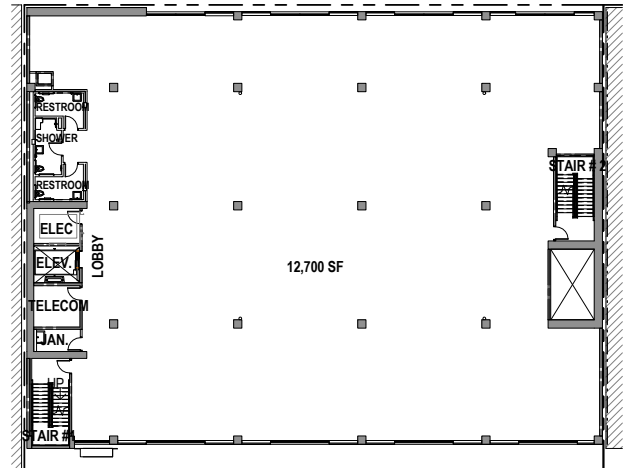
Ground Floor

- 8,410 SF of manufacturing space
- Available as full floor or spaces starting at 1,000 SF
- 6 roll-up doors and 6 person doors
- 18' ceilings



Floors 2, 3, and 4

- 12,700 SF of manufacturing space on each floor
- Available as full floor or spaces starting at 1,000 SF
- 11' ceilings



Floor plans courtesy of FME Architecture

PlaceMade
Manufacturing
Foundry

RENT: Starting at \$2/SF/Mo IG

SQUARE FEET: 1,000 to 25,400 SF

USE: Manufacturing (PDR)

AVAILABLE: Mid-2018



CONTACT: Gina Falsetto
gina@sfmade.org
415-408-5605 x8